

TRIB1 Antibody (C-term)
Purified Rabbit Polyclonal Antibody (Pab)
Catalog # AP7726b**Specification**

TRIB1 Antibody (C-term) - Product Information

Application	WB,E
Primary Accession	O96RU8
Other Accession	O8K4K4
Reactivity	Human
Predicted	Mouse
Host	Rabbit
Clonality	Polyclonal
Isotype	Rabbit IgG
Antigen Region	341-370

TRIB1 Antibody (C-term) - Additional Information**Gene ID** 10221**Other Names**

Tribbles homolog 1, TRB-1, G-protein-coupled receptor-induced gene 2 protein, GIG-2, SKIP1, TRIB1 (http://www.genenames.org/cgi-bin/gene_symbol_report?hgnc_id=16891)
target="_blank">HGNC:16891)

Target/Specificity

This TRIB1 antibody is generated from rabbits immunized with a KLH conjugated synthetic peptide between 341-370 amino acids from the C-terminal region of human TRIB1.

Dilution

WB~~1:2000

E~~Use at an assay dependent concentration.

Format

Purified polyclonal antibody supplied in PBS with 0.09% (W/V) sodium azide. This antibody is prepared by Saturated Ammonium Sulfate (SAS) precipitation followed by dialysis against PBS.

Storage

Maintain refrigerated at 2-8°C for up to 2 weeks. For long term storage store at -20°C in small aliquots to prevent freeze-thaw cycles.

Precautions

TRIB1 Antibody (C-term) is for research use only and not for use in diagnostic or therapeutic procedures.

TRIB1 Antibody (C-term) - Protein Information**Name** TRIB1 ([HGNC:16891](#))

Function Adapter protein involved in protein degradation by interacting with COP1 ubiquitin ligase (PubMed:[27041596](#)). The COP1- binding motif is masked by autoinhibitory interactions with the protein kinase domain (PubMed:[26455797](#)). Serves to alter COP1 substrate specificity by directing the activity of COP1 toward CEBPA (PubMed:[27041596](#)). Binds selectively the recognition sequence of CEBPA (PubMed:[26455797](#)). Regulates myeloid cell differentiation by altering the expression of CEBPA in a COP1-dependent manner (By similarity). Controls macrophage, eosinophil and neutrophil differentiation via the COP1-binding domain (By similarity). Interacts with MAPK kinases and regulates activation of MAP kinases, but has no kinase activity (PubMed:[15299019](#), PubMed:[26455797](#)).

Tissue Location

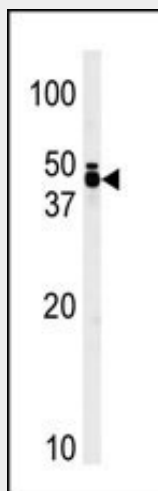
Expressed in most human tissues with the highest levels in skeletal muscle, thyroid gland, pancreas, peripheral blood leukocytes, and bone marrow.

TRIB1 Antibody (C-term) - Protocols

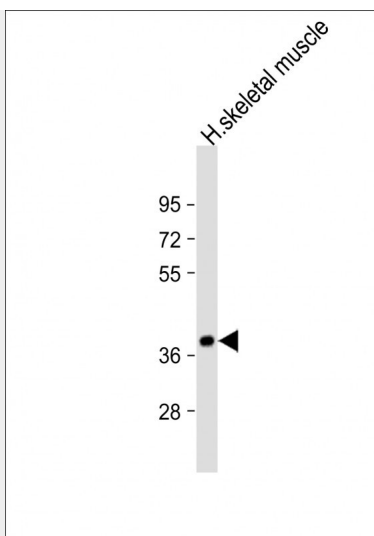
Provided below are standard protocols that you may find useful for product applications.

- [Western Blot](#)
- [Blocking Peptides](#)
- [Dot Blot](#)
- [Immunohistochemistry](#)
- [Immunofluorescence](#)
- [Immunoprecipitation](#)
- [Flow Cytometry](#)
- [Cell Culture](#)

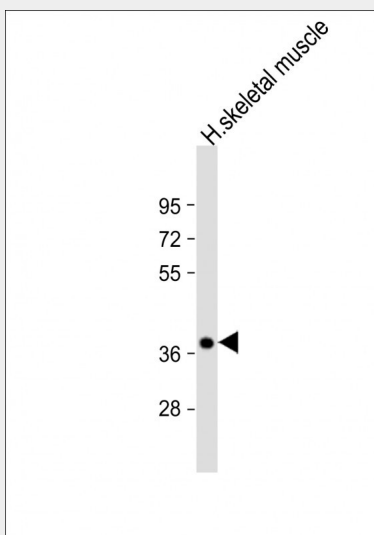
TRIB1 Antibody (C-term) - Images



Western blot analysis of anti-TRIB1 Pab (AP7726b) in T47D cell line lysate (35ug/lane). TRIB1(arrow) was detected using the purified Pab.



Anti-TRIB1 Antibody C-term at 1:2000 dilution + human skeletal muscle lysate Lysates/proteins at 20 µg per lane. Secondary Goat Anti-Rabbit IgG, (H+L), Peroxidase conjugated at 1/10000 dilution. Predicted band size : 41 kDa Blocking/Dilution buffer: 5% NFDm/TBST.



Anti-TRIB1 Antibody C-term at 1:2000 dilution + human skeletal muscle lysate Lysates/proteins at 20 µg per lane. Secondary Goat Anti-Rabbit IgG, (H+L), Peroxidase conjugated at 1/10000 dilution. Predicted band size : 41 kDa Blocking/Dilution buffer: 5% NFDm/TBST.

TRIB1 Antibody (C-term) - Background

TRIB1 antibody, also called gprotein coupled receptor induced, skip1, gig2, c8fwATP, functions in binding protein binding, protein kinase inhibitor activity, and protein serine/threonine kinase activities.

Overexpression of TRIB1 in HeLa cells repressed the basal activity of the IL8 promoter by inhibiting AP1 activity. Overexpression of TRIB1 inhibited oncogenic Ras -driven AP1 activation and MEKK1-mediated AP1 activation. ERK activation was enhanced by TRIB1. Coimmunoprecipitation and yeast 2-hybrid assays showed that MEK1 interacted with both TRIB1 and TRIB3, and MKK4 interacted specifically with TRIB1. Cotransfection of MKK4 enhanced the level of TRIB1, indicating that the TRIB-MAPKK interaction stabilized TRIB1.

TRIB1 Antibody (C-term) - References

Kiss-Toth, E., et al., J. Biol. Chem. 279(41):42703-42708 (2004).

Wu, M., et al., J. Biol. Chem. 278(29):27072-27079 (2003).

Wilkin, F., et al., Eur. J. Biochem. 248(3):660-668 (1997).

TRIB1 Antibody (C-term) - Citations

- [An improvement in skeletal muscle mitochondrial capacity with short-term aerobic training is associated with changes in Tribbles 1 expression.](#)
- [Sin3A-associated protein, 18 kDa, a novel binding partner of TRIB1, regulates MTP expression.](#)
- [TRIB1 downregulates hepatic lipogenesis and glycogenesis via multiple molecular interactions.](#)
- [Identification of tribbles-1 as a novel binding partner of Foxp3 in regulatory T cells.](#)